



**February 2011**  
**ADS Quick Install and License Setup**

© **Agilent Technologies, Inc. 2000-2011**

5301 Stevens Creek Blvd., Santa Clara, CA 95052 USA

No part of this documentation may be reproduced in any form or by any means (including electronic storage and retrieval or translation into a foreign language) without prior agreement and written consent from Agilent Technologies, Inc. as governed by United States and international copyright laws.

**Acknowledgments**

Mentor Graphics is a trademark of Mentor Graphics Corporation in the U.S. and other countries. Mentor products and processes are registered trademarks of Mentor Graphics Corporation. \* Calibre is a trademark of Mentor Graphics Corporation in the US and other countries. "Microsoft®, Windows®, MS Windows®, Windows NT®, Windows 2000® and Windows Internet Explorer® are U.S. registered trademarks of Microsoft Corporation. Pentium® is a U.S. registered trademark of Intel Corporation. PostScript® and Acrobat® are trademarks of Adobe Systems Incorporated. UNIX® is a registered trademark of the Open Group. Oracle and Java and registered trademarks of Oracle and/or its affiliates. Other names may be trademarks of their respective owners. SystemC® is a registered trademark of Open SystemC Initiative, Inc. in the United States and other countries and is used with permission. MATLAB® is a U.S. registered trademark of The Math Works, Inc.. HiSIM2 source code, and all copyrights, trade secrets or other intellectual property rights in and to the source code in its entirety, is owned by Hiroshima University and STARC. FLEXIm is a trademark of Globetrotter Software, Incorporated. Layout Boolean Engine by Klaas Holwerda, v1.7 <http://www.xs4all.nl/~kholwerd/bool.html> . FreeType Project, Copyright (c) 1996-1999 by David Turner, Robert Wilhelm, and Werner Lemberg. QuestAgent search engine (c) 2000-2002, JObjects. Motif is a trademark of the Open Software Foundation. Netscape is a trademark of Netscape Communications Corporation. Netscape Portable Runtime (NSPR), Copyright (c) 1998-2003 The Mozilla Organization. A copy of the Mozilla Public License is at <http://www.mozilla.org/MPL/> . FFTW, The Fastest Fourier Transform in the West, Copyright (c) 1997-1999 Massachusetts Institute of Technology. All rights reserved.

The following third-party libraries are used by the NlogN Momentum solver:

"This program includes Metis 4.0, Copyright © 1998, Regents of the University of Minnesota", <http://www.cs.umn.edu/~metis> , METIS was written by George Karypis (karypis@cs.umn.edu).

Intel@ Math Kernel Library, <http://www.intel.com/software/products/mkl>

SuperLU\_MT version 2.0 - Copyright © 2003, The Regents of the University of California, through Lawrence Berkeley National Laboratory (subject to receipt of any required approvals from U.S. Dept. of Energy). All rights reserved. SuperLU Disclaimer: THIS SOFTWARE IS PROVIDED BY THE COPYRIGHT HOLDERS AND CONTRIBUTORS "AS IS" AND ANY EXPRESS OR IMPLIED WARRANTIES, INCLUDING, BUT NOT LIMITED TO, THE IMPLIED WARRANTIES OF MERCHANTABILITY AND FITNESS FOR A PARTICULAR PURPOSE ARE DISCLAIMED. IN NO EVENT SHALL THE COPYRIGHT OWNER OR CONTRIBUTORS BE LIABLE FOR ANY DIRECT, INDIRECT, INCIDENTAL, SPECIAL, EXEMPLARY, OR CONSEQUENTIAL DAMAGES (INCLUDING, BUT NOT LIMITED TO, PROCUREMENT OF

SUBSTITUTE GOODS OR SERVICES; LOSS OF USE, DATA, OR PROFITS; OR BUSINESS INTERRUPTION) HOWEVER CAUSED AND ON ANY THEORY OF LIABILITY, WHETHER IN CONTRACT, STRICT LIABILITY, OR TORT (INCLUDING NEGLIGENCE OR OTHERWISE) ARISING IN ANY WAY OUT OF THE USE OF THIS SOFTWARE, EVEN IF ADVISED OF THE POSSIBILITY OF SUCH DAMAGE.

7-zip - 7-Zip Copyright: Copyright (C) 1999-2009 Igor Pavlov. Licenses for files are: 7z.dll: GNU LGPL + unRAR restriction, All other files: GNU LGPL. 7-zip License: This library is free software; you can redistribute it and/or modify it under the terms of the GNU Lesser General Public License as published by the Free Software Foundation; either version 2.1 of the License, or (at your option) any later version. This library is distributed in the hope that it will be useful, but WITHOUT ANY WARRANTY; without even the implied warranty of MERCHANTABILITY or FITNESS FOR A PARTICULAR PURPOSE. See the GNU Lesser General Public License for more details. You should have received a copy of the GNU Lesser General Public License along with this library; if not, write to the Free Software Foundation, Inc., 59 Temple Place, Suite 330, Boston, MA 02111-1307 USA. unRAR copyright: The decompression engine for RAR archives was developed using source code of unRAR program. All copyrights to original unRAR code are owned by Alexander Roshal. unRAR License: The unRAR sources cannot be used to re-create the RAR compression algorithm, which is proprietary. Distribution of modified unRAR sources in separate form or as a part of other software is permitted, provided that it is clearly stated in the documentation and source comments that the code may not be used to develop a RAR (WinRAR) compatible archiver. 7-zip Availability: <http://www.7-zip.org/>

AMD Version 2.2 - AMD Notice: The AMD code was modified. Used by permission. AMD copyright: AMD Version 2.2, Copyright © 2007 by Timothy A. Davis, Patrick R. Amestoy, and Iain S. Duff. All Rights Reserved. AMD License: Your use or distribution of AMD or any modified version of AMD implies that you agree to this License. This library is free software; you can redistribute it and/or modify it under the terms of the GNU Lesser General Public License as published by the Free Software Foundation; either version 2.1 of the License, or (at your option) any later version. This library is distributed in the hope that it will be useful, but WITHOUT ANY WARRANTY; without even the implied warranty of MERCHANTABILITY or FITNESS FOR A PARTICULAR PURPOSE. See the GNU Lesser General Public License for more details. You should have received a copy of the GNU Lesser General Public License along with this library; if not, write to the Free Software Foundation, Inc., 51 Franklin St, Fifth Floor, Boston, MA 02110-1301 USA Permission is hereby granted to use or copy this program under the terms of the GNU LGPL, provided that the Copyright, this License, and the Availability of the original version is retained on all copies. User documentation of any code that uses this code or any modified version of this code must cite the Copyright, this License, the Availability note, and "Used by permission." Permission to modify the code and to distribute modified code is granted, provided the Copyright, this License, and the Availability note are retained, and a notice that the code was modified is included. AMD Availability: <http://www.cise.ufl.edu/research/sparse/amd>

UMFPACK 5.0.2 - UMFPACK Notice: The UMFPACK code was modified. Used by permission. UMFPACK Copyright: UMFPACK Copyright © 1995-2006 by Timothy A. Davis. All Rights Reserved. UMFPACK License: Your use or distribution of UMFPACK or any modified version of UMFPACK implies that you agree to this License. This library is free software; you can redistribute it and/or modify it under the terms of the GNU Lesser General Public License

as published by the Free Software Foundation; either version 2.1 of the License, or (at your option) any later version. This library is distributed in the hope that it will be useful, but WITHOUT ANY WARRANTY; without even the implied warranty of MERCHANTABILITY or FITNESS FOR A PARTICULAR PURPOSE. See the GNU Lesser General Public License for more details. You should have received a copy of the GNU Lesser General Public License along with this library; if not, write to the Free Software Foundation, Inc., 51 Franklin St, Fifth Floor, Boston, MA 02110-1301 USA Permission is hereby granted to use or copy this program under the terms of the GNU LGPL, provided that the Copyright, this License, and the Availability of the original version is retained on all copies. User documentation of any code that uses this code or any modified version of this code must cite the Copyright, this License, the Availability note, and "Used by permission." Permission to modify the code and to distribute modified code is granted, provided the Copyright, this License, and the Availability note are retained, and a notice that the code was modified is included. UMFPACK Availability: <http://www.cise.ufl.edu/research/sparse/umfpack> UMFPACK (including versions 2.2.1 and earlier, in FORTRAN) is available at <http://www.cise.ufl.edu/research/sparse> . MA38 is available in the Harwell Subroutine Library. This version of UMFPACK includes a modified form of COLAMD Version 2.0, originally released on Jan. 31, 2000, also available at <http://www.cise.ufl.edu/research/sparse> . COLAMD V2.0 is also incorporated as a built-in function in MATLAB version 6.1, by The MathWorks, Inc. <http://www.mathworks.com> . COLAMD V1.0 appears as a column-preordering in SuperLU (SuperLU is available at <http://www.netlib.org> ). UMFPACK v4.0 is a built-in routine in MATLAB 6.5. UMFPACK v4.3 is a built-in routine in MATLAB 7.1.

Qt Version 4.6.3 - Qt Notice: The Qt code was modified. Used by permission. Qt copyright: Qt Version 4.6.3, Copyright (c) 2010 by Nokia Corporation. All Rights Reserved. Qt License: Your use or distribution of Qt or any modified version of Qt implies that you agree to this License. This library is free software; you can redistribute it and/or modify it under the terms of the GNU Lesser General Public License as published by the Free Software Foundation; either version 2.1 of the License, or (at your option) any later version. This library is distributed in the hope that it will be useful, but WITHOUT ANY WARRANTY; without even the implied warranty of MERCHANTABILITY or FITNESS FOR A PARTICULAR PURPOSE. See the GNU Lesser General Public License for more details. You should have received a copy of the GNU Lesser General Public License along with this library; if not, write to the Free Software Foundation, Inc., 51 Franklin St, Fifth Floor, Boston, MA 02110-1301 USA Permission is hereby granted to use or copy this program under the terms of the GNU LGPL, provided that the Copyright, this License, and the Availability of the original version is retained on all copies. User documentation of any code that uses this code or any modified version of this code must cite the Copyright, this License, the Availability note, and "Used by permission." Permission to modify the code and to distribute modified code is granted, provided the Copyright, this License, and the Availability note are retained, and a notice that the code was modified is included. Qt Availability: <http://www.qtsoftware.com/downloads> Patches Applied to Qt can be found in the installation at: `$HPEESOF_DIR/prod/licenses/thirdparty/qt/patches`. You may also contact Brian Buchanan at Agilent Inc. at [brian\\_buchanan@agilent.com](mailto:brian_buchanan@agilent.com) for more information.

The HiSIM\_HV source code, and all copyrights, trade secrets or other intellectual property rights in and to the source code, is owned by Hiroshima University and/or STARC.

**Errata** The ADS product may contain references to "HP" or "HPEESOF" such as in file names and directory names. The business entity formerly known as "HP EEsof" is now part of Agilent Technologies and is known as "Agilent EEsof". To avoid broken functionality and to maintain backward compatibility for our customers, we did not change all the names and labels that contain "HP" or "HPEESOF" references.

**Warranty** The material contained in this document is provided "as is", and is subject to being changed, without notice, in future editions. Further, to the maximum extent permitted by applicable law, Agilent disclaims all warranties, either express or implied, with regard to this documentation and any information contained herein, including but not limited to the implied warranties of merchantability and fitness for a particular purpose. Agilent shall not be liable for errors or for incidental or consequential damages in connection with the furnishing, use, or performance of this document or of any information contained herein. Should Agilent and the user have a separate written agreement with warranty terms covering the material in this document that conflict with these terms, the warranty terms in the separate agreement shall control.

**Technology Licenses** The hardware and/or software described in this document are furnished under a license and may be used or copied only in accordance with the terms of such license. Portions of this product include the SystemC software licensed under Open Source terms, which are available for download at <http://systemc.org/>. This software is redistributed by Agilent. The Contributors of the SystemC software provide this software "as is" and offer no warranty of any kind, express or implied, including without limitation warranties or conditions or title and non-infringement, and implied warranties or conditions merchantability and fitness for a particular purpose. Contributors shall not be liable for any damages of any kind including without limitation direct, indirect, special, incidental and consequential damages, such as lost profits. Any provisions that differ from this disclaimer are offered by Agilent only.

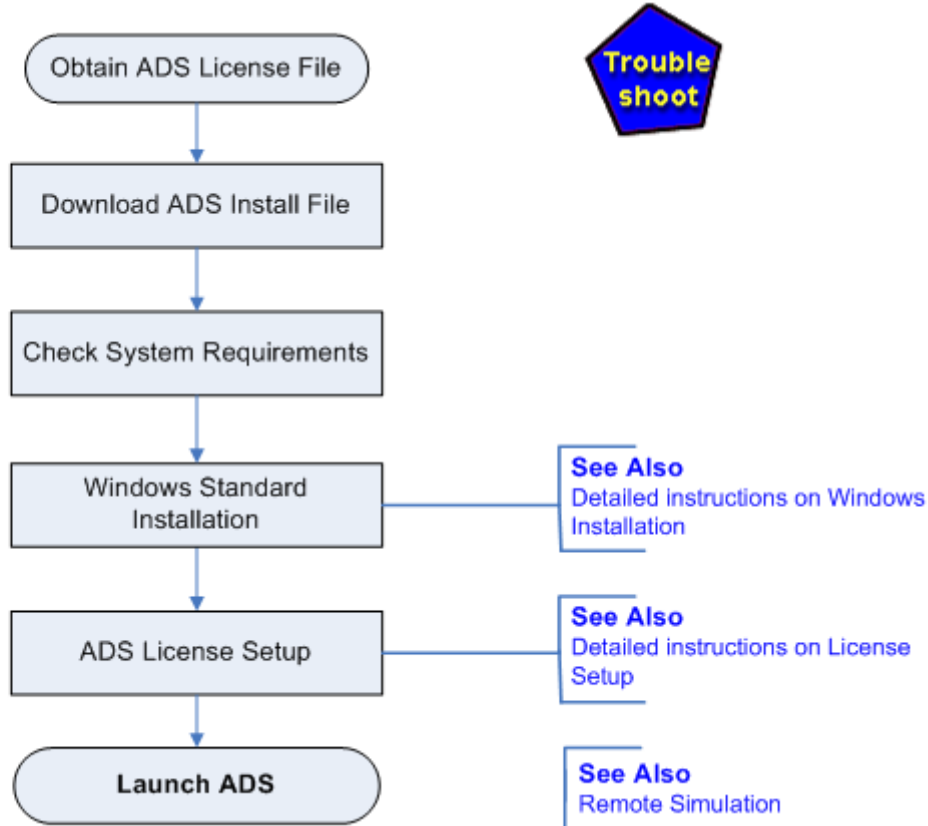
**Restricted Rights Legend** U.S. Government Restricted Rights. Software and technical data rights granted to the federal government include only those rights customarily provided to end user customers. Agilent provides this customary commercial license in Software and technical data pursuant to FAR 12.211 (Technical Data) and 12.212 (Computer Software) and, for the Department of Defense, DFARS 252.227-7015 (Technical Data - Commercial Items) and DFARS 227.7202-3 (Rights in Commercial Computer Software or Computer Software Documentation).

ADS Quick Install - Windows . . . . .	7
Obtain ADS License File . . . . .	7
Download ADS Install File . . . . .	8
Check System Requirements . . . . .	8
Windows Standard Installation . . . . .	8
ADS License Setup . . . . .	9
Launch ADS . . . . .	11
ADS Quick Install - Unix . . . . .	12
Installation Overview . . . . .	12
Obtain ADS License File . . . . .	12
Download ADS Install File . . . . .	13
Check System Requirements . . . . .	13
Linux and Unix Standard Mode Installation . . . . .	13
ADS License setup . . . . .	14
Launch ADS in Unix / Linux . . . . .	16
License Setup through Wizard . . . . .	17
Starting License Setup Wizard . . . . .	18
Request New License File . . . . .	19
License File Setup . . . . .	20
License Server Setup . . . . .	22
Upgrading your License File . . . . .	23
License Setup for Previous ADS Releases . . . . .	25
Remote Simulation . . . . .	26
Circuit Remote Simulation . . . . .	26
EM Remote Simulation . . . . .	26

# ADS Quick Install - Windows

Advanced Design System (ADS) can be installed on a PC running on Windows systems by downloading the ADS install file from the Agilent EEs of EDA Website . The following flowchart illustrates quick installation steps that help you install ADS quickly and complete the license setup (using interactive License Setup Wizard).

✔ Click on the respective block in the flowchart below for further details on the selected topic.



## Obtain ADS License File

Agilent recommends you to obtain ADS License file before starting the installation and license setup. Click [here](#) for online submission of ADS license request. You can apply for:


- **Evaluation License:** If your request for ADS evaluation license is approved, you will receive a license file (file with extension `.lic`) as an attachment through e-mail. Save this license file on your computer as this file is required while setting up your ADS License.
- **Purchased License:** If you purchase the ADS license, you will receive an e-mail containing an entitlement certificate. Follow the instructions in e-mail which directs you to the [Agilent Software Manager \(ASM\)](#) to redeem the certificate for a license file. The license file will be sent through e-mail, or it can also be downloaded from



ASM. Save the license file on your computer as this file is required while setting up your ADS License. If ADS is already installed on your machine then skip all the installation steps and see *Upgrading your License* (qinstall).

## Download ADS Install File

Click [here](#) to download the ADS install file `ads2011_01_rXXX_windows.exe` (windows version), where `rXXX` is version number.

 Ensure that your ADS download is successful by comparing the downloaded file size with the one available in the download page. In case of any difference, you must download the install file again.

[Back to Installation Flowchart](#)    [Troubleshoot - ADS Download](#)

## Check System Requirements

Ensure that your hardware and software configuration meets the following minimum requirements to install and/or run ADS on a windows based PC.

<b>RAM</b>	1 GB for Windows XP.
<b>Hard Disk</b>	4.5 GB for a complete installation.
<b>Web Browser</b>	<ul style="list-style-type: none"> <li>• Microsoft Internet Explorer version 5.5 or higher.</li> <li>• Mozilla Firefox 3.3 or higher.</li> <li>• Acrobat Reader 5.0 or higher (to view PDF files).</li> </ul>
<b>Display</b>	High-resolution color only (Super VGA, 1024x768, 15-inch monitor minimum).
<b>Internet Access</b>	High speed internet access required to download the ADS install file.
<b>Processor</b>	Intel Pentium 4 or higher, AMD XP 3000 or higher.
<b>Compiler</b>	(only for model development and 64-bit simulations involving Verilog-A components) C++ and C: Microsoft Visual Studio .NET 2008 with SP1/Hotfix (Windows Vista 64 also requires Microsoft Visual Studio 2008 Team Suite Service Pack 1 and Visual Studio 2008 Service Pack 1 Update for Windows Vista).

For more details, see *Check the System Requirement* (instalpc).

[Back to Installation Flowchart](#)

## Windows Standard Installation

Run the self extracting `ads2011_01_rXXX_windows.exe` file to launch the ADS installation.

1. Follow the online instructions until you reach the *Install Set* screen.
2. Choose **Custom** or **Complete** installation option and click **Next** to continue.



1. For Complete installation, 4.5 GB disk space is required. If you choose a Complete installation, skip the next step.
2. For Custom installation, choose the items you want to install. Click any item name to see the description of the same. Select the items you want to install and click **Next** to continue. For a list of custom installation items, see **ADS Installation Options (instalpc)**. The ability to run select items is determined by the licenses you have purchased.

**Note for Custom Installation**

- *ADS programs and tools* (which includes *Layout, Simulators, and Schematic Capture*) must be selected otherwise ADS will not run properly.
- *Manuals & Help* is selected by default to install the entire ADS documentation set. If you uncheck this option, documentation and help files will not be available regardless of which other options you choose.

3. Enter the install folder location at the Choose Install Folder screen and click **Next**.
4. Choose the location of your home folder at the Set Your Home Directory screen. The folder you specify will be the default startup folder for ADS. It will also be used to store the configuration data in a subfolder called `hpeesof`.
5. Review your choices at the Pre-Installation Summary screen and click **Install** to start the ADS installation.
6. Once ADS is installed successfully, click **Done** to quit the installer. The ADS License Setup Wizard starts automatically after this step. For quick license setup instructions, see [ADS License Setup](#).

**Note**

For detailed license setup instructions, see *Windows License Setup (instalpc)*.

[Back to Installation Flowchart](#)    [Troubleshoot - ADS Download](#)

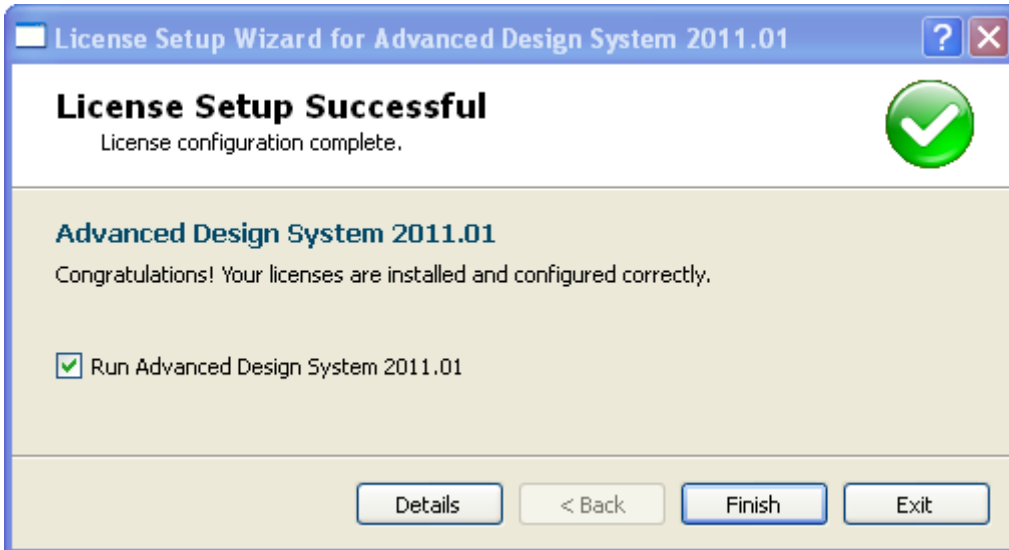
## ADS License Setup

The ADS License Setup Wizard starts automatically once ADS is installed successfully. If you have already received your license file (file with extension `.lic`), then you can proceed with the license setup. To apply for a new license click [here](#) . For more details, see **License Setup through Wizard (qinstall)**.

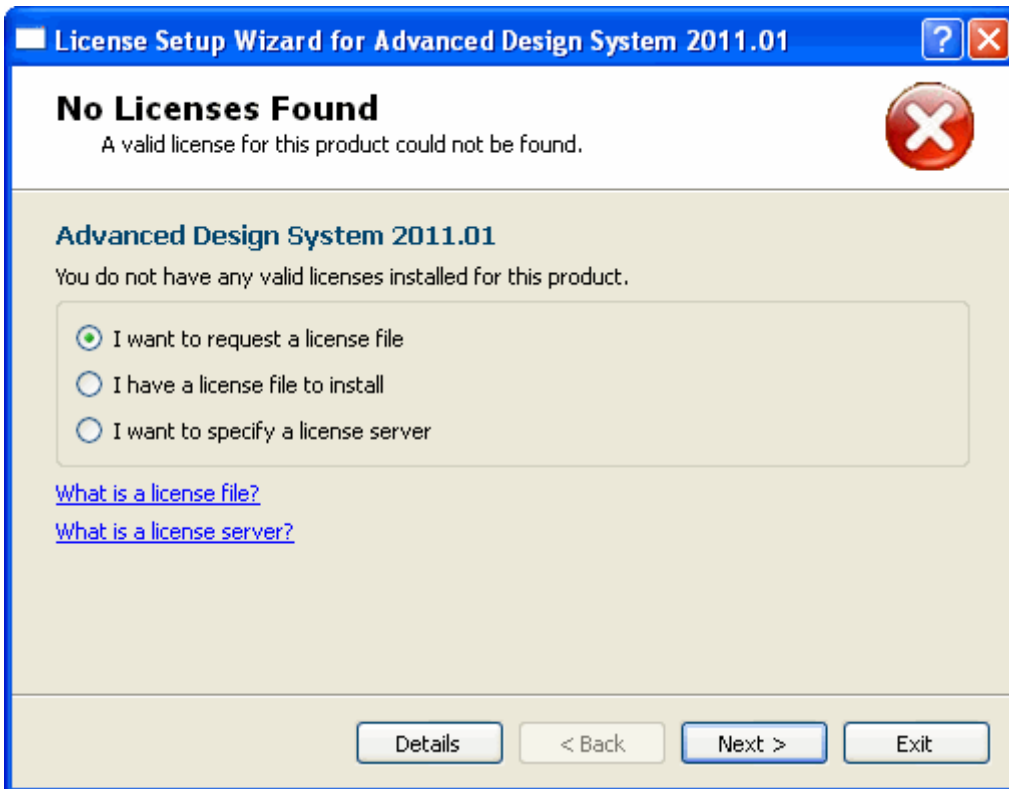
**Note**

ADS 2011 uses license file version 2.9, which is a higher version than the license file used for the previous version of ADS. If ADS is already installed on your machine, then see **Upgrading your License File (qinstall)** .

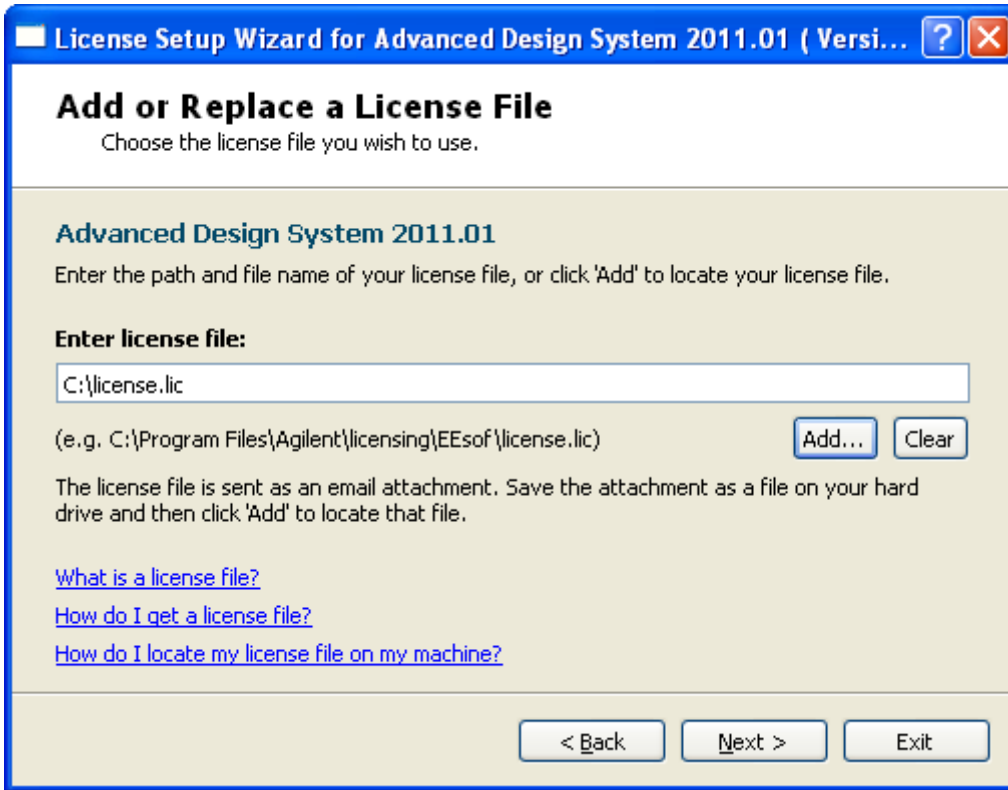
If you already have a valid license to run ADS and completed the set up, ADS License Setup Wizard displays a confirmation message. Click the **Finish** button to launch ADS.



If you have the valid license file (and not yet configured the same) then select **I have a license file to install** from the wizard and click **Next**.



To add a new license file or replace existing license file, click **Add** and select the license file to be added or replaced and click **Next**. The wizard completes the license setup and a confirmation message is displayed after successful setup of license. The wizard displays a confirmation message. Click the **Finish** button to launch ADS.



**Note**  
For detailed license setup instructions using License Setup Wizard, see ***License Setup through Wizard (qinstall)***.

[Back to Installation Flowchart](#)    [Troubleshoot - ADS License Setup](#)

## Launch ADS

To run ADS, from the Start menu choose  
**Programs > Advanced Design System 2011.01 > Advanced Design System 2011.01**

**Notes**

- For detailed instructions to start ADS, see *Using Advanced Design System (instalpc)*.
- ADS may not start if there are any issues in ADS License setup.

[Back to Installation Flowchart](#)    [Troubleshoot - Installation](#)

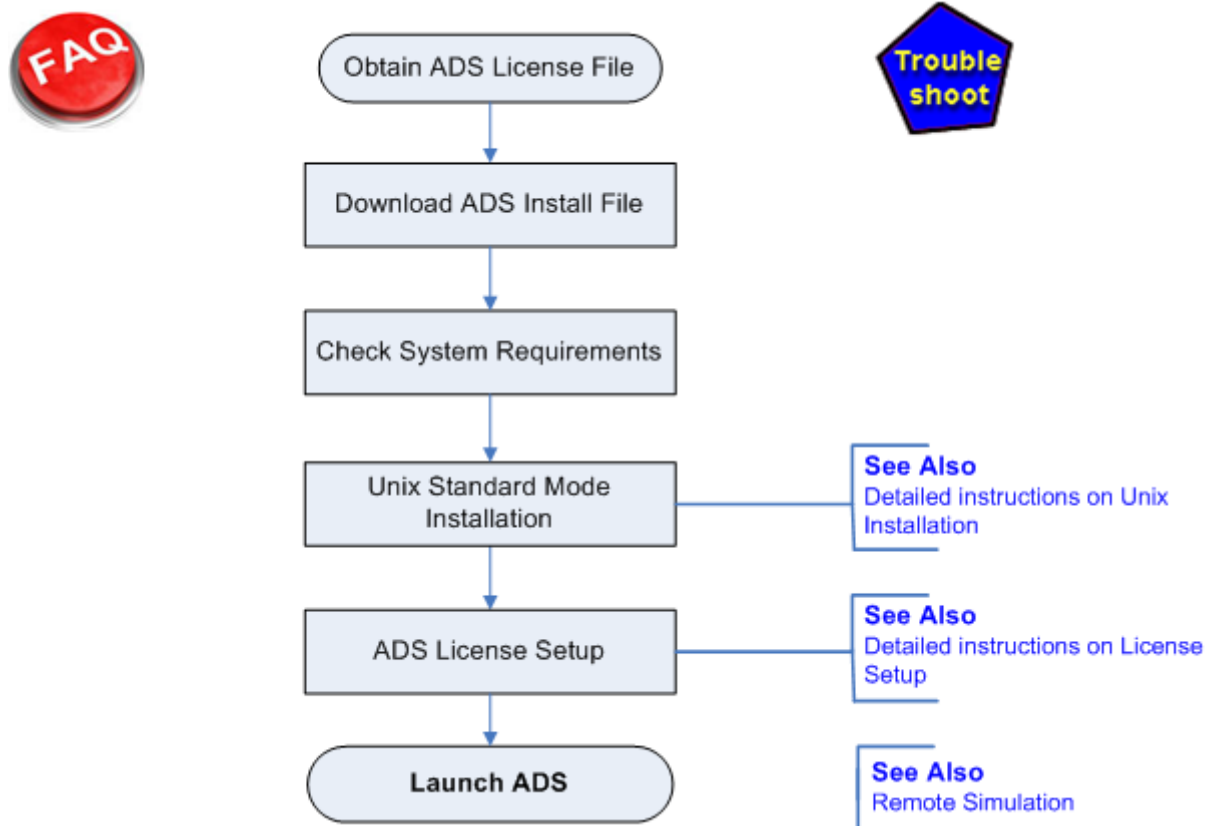
# ADS Quick Install - Unix

## Installation Overview

Advanced Design System can be installed on a PC running Windows or UNIX/Linux systems by downloading the ADS install file from the [Agilent EEsof EDA Website](#) . The following flowchart illustrates quick installation steps that help you install the Unix version of ADS quickly and complete the license setup (using interactive License Wizard).

✔ Click on the respective box in the flowchart below for further details on the selected topic.

### ADS Installation Flowchart



## Obtain ADS License File


Agilent recommends you to obtain ADS License file before starting the installation and setup. Click [here](#) for online submission of your license request. You can apply for:

- **Evaluation License:** If your request for ADS evaluation license is approved, you will receive a license file (file with extension `.lic`) as an attachment through e-mail. Save this license file on your computer as this file is required while setting up your ADS License.

- **Purchased license:** If you purchase the ADS license, you will receive an e-mail containing an entitlement certificate. Follow the instructions in e-mail which directs you to the [Agilent Software Manager \(ASM\)](#) to redeem the certificate for a license file. The license file will be sent through e-mail, or it can also be downloaded from ASM. Save the license file on your computer as this file is required while setting up your ADS License. If ADS is already installed on your machine then skip all the installation steps and see *Upgrading your License* (qinstall).

## Download ADS Install File

Click [here](#) to download the ADS install file `ads2011_01_rXXX_linux_x86.tar`, where rXXX is version number.


 Ensure that your ADS download is successful by comparing the downloaded file size with the one available in the download page. In case of any difference, you must download the install file again.

[Back to Installation Flowchart](#)    [Troubleshoot - ADS Download](#)

## Check System Requirements

Ensure that your hardware and software configuration meets the following minimum system requirements to install and/or run ADS.

<b>Display</b>	Displays High-resolution color only. (Super VGA, 1024x768, 15-inch monitor minimum) Processor ADS is not supported on Intel Itanium-based workstations. Intel Pentium® 4 or better, or AMD XP 3000 or better.
<b>RAM</b>	1 GB RAM recommended minimum. Additional RAM enables you to simulate larger designs. However, on a 32-bit operating system, its processes cannot use more than 2 GB regardless of the maximum addressable memory available on your system.
<b>Swap Space</b>	512 MB recommended minimum, increased swap space may be required for larger designs.
<b>Web Browser</b>	<ul style="list-style-type: none"> <li>• Microsoft Internet Explorer version 5.5 or higher.</li> <li>• Mozilla Firefox 3.3 or higher.</li> <li>• Acrobat Reader 5.0 or higher (to view PDF files).</li> </ul>
<b>Hard Disk Space</b>	ADS requires about 1.3 GB for Minimum Installation and 4.5 GB for a Complete Installation.
<b>Compiler</b>	Compiler is required only for model development. : C++ and CC: SunStudio 11 ; C++: gcc Version 4.4.2

 For more details, see *Check the System Requirements* (install).

[Back to Installation Flowchart](#)

## Linux and Unix Standard Mode Installation

1. Log onto the system with permissions to write to the disk where you want to install ADS.

**i** To install ADS using the GUI setup instructions you must set the display environment variable. For details on *Setting the Display*. If you are running Netscape browser, or another program that uses a lot of color resources, you must close the application before starting the Advanced Design System installation.

2. Create a new directory, for example `ADS_setup`, and save the downloaded ADS installation file `ads2011_01_rXXX_linux_x86.tar` in it.
3. Untar the installation file using the following command:  

```
tar -xvf ads2011_01_rXXX_linux_x86.tar
```
4. Start the installation program using the following command:  

```
./SETUP.SH
```
5. Follow the online instructions till you reach *Install Set* screen. Choose **Custom** or **Complete** installation option. Click **Next** to continue.
  1. For complete installation, 4.5 GB disk space is required. If you choose a Complete installation, skip the next step.
  2. Custom installation lets you choose the ADS items you want to install. For a list of custom installation items, see *ADS Installation Options*. The ability to run select items is determined by the licenses you have purchased.
  3. For Custom installation, choose the items you want to install. Click any item name to see the description of the same. Select the items you want to install and click **Next** to continue.
  4. You must choose to install **ADS programs and tools** which includes *Layout, Simulators, and Schematic Capture*; otherwise ADS will not run properly.
  5. *Manuals & Help* is selected by default to install the entire ADS documentation set. If you uncheck this item, documentation and help files will not be available regardless of which other items you choose.
6. At the Choose Install Folder screen, enter the install folder location and click **Next**.
7. At the Set Your Home Directory screen, choose the location of your home directory. The folder you specify will be the default startup folder for ADS. It will also be used to store the configuration data in a subfolder called `hpeesof`.
8. At the Pre-Installation Summary screen, review your choices and click **Install** to start the ADS installation. If you want to change the installation directory, click **Previous**.
9. Once ADS is installed successfully, click **Done** to quit the installer. The [ADS License Setup](#) Wizard starts automatically after this step which can be used to setup ADS licenses (through wizard).

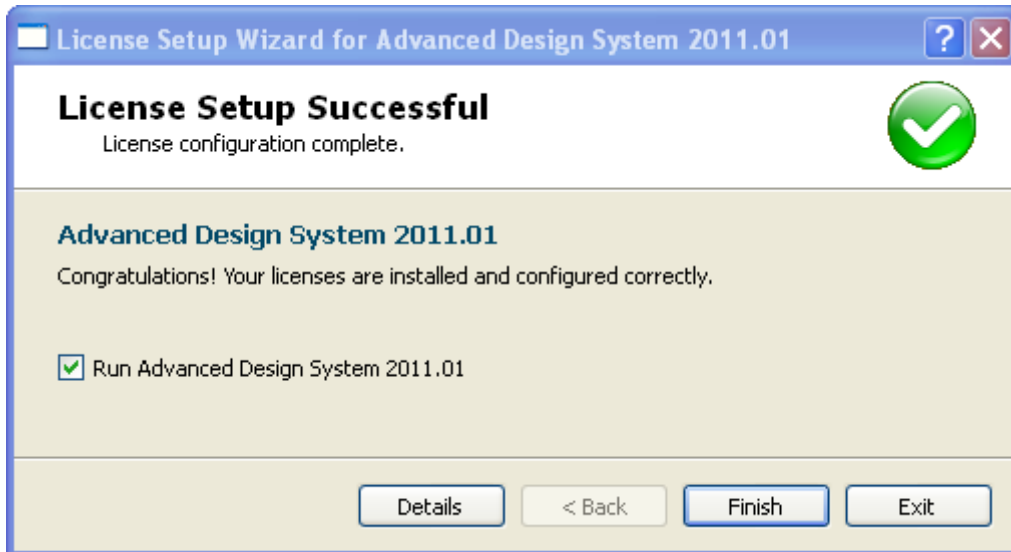
**i Note**  
For detailed license setup instructions (without ADS License Setup wizard), see **ADS License Setup - Unix and Linux (install)**.

[Back to Installation Flowchart](#)    [Troubleshoot - Installation](#)

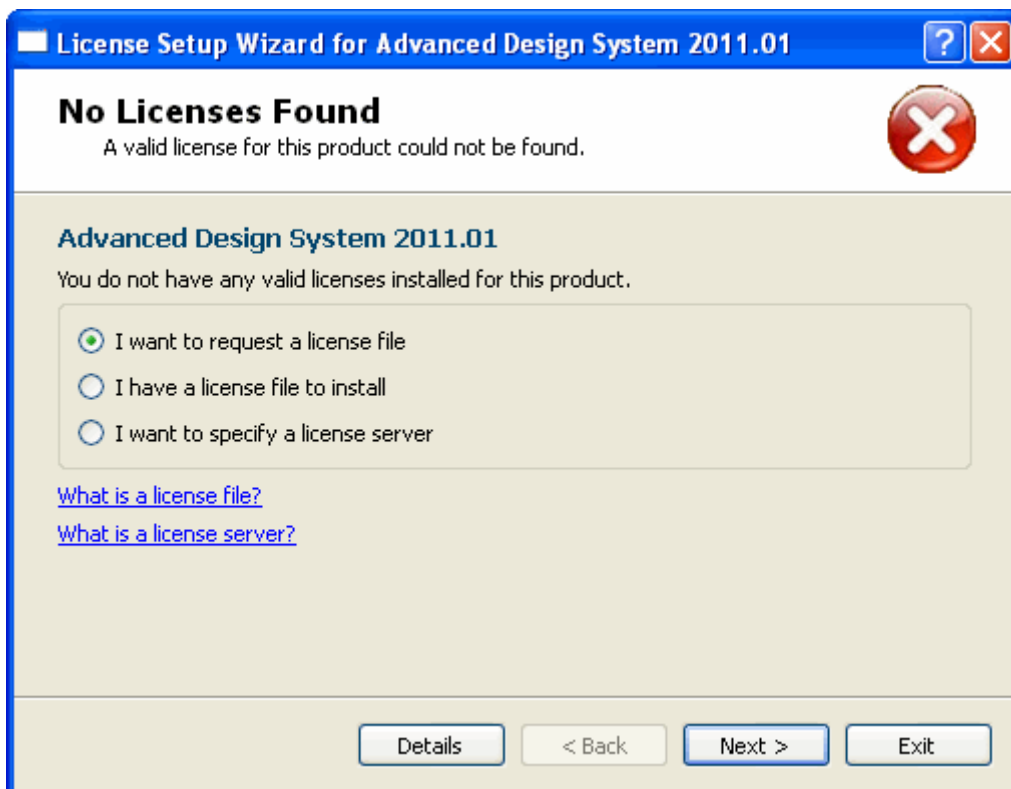
## ADS License setup

The ADS License Setup Wizard starts automatically once ADS is installed successfully. If you have already received your license file (file with extension `.lic`), then you can proceed with the license setup. To apply for a new license click [here](#) . For more details on setting licenses (using license setup wizard), see **License Setup through Wizard (qinstall)**.

If you already have a valid license to run ADS and completed the set up, ADS License Setup Wizard displays a confirmation message. Click the **Finish** button (see figure below) to launch ADS.

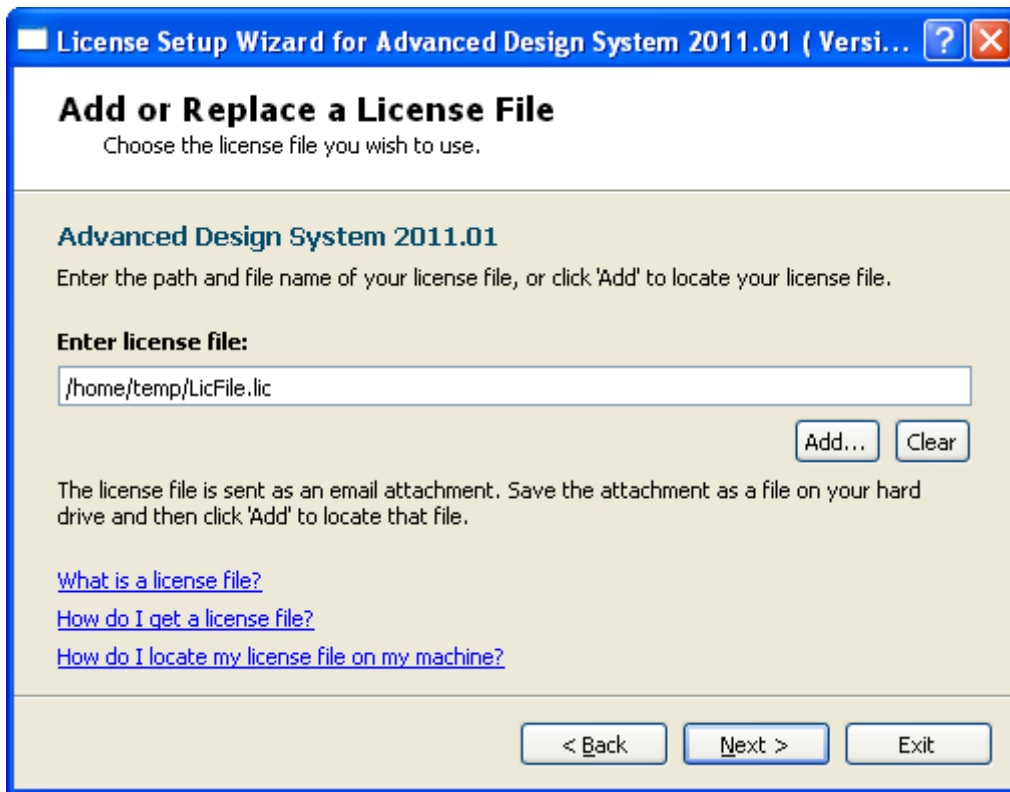


If you have the valid license file (and not yet configured the same) then select **I have a license file to install** from the wizard and click **Next**.





To add a new license file or replace existing license file, click **Add** and select the license file to be added or replaced and click **Next**. The wizard completes the license setup and a confirmation message is displayed after successful setup of license. The wizard displays a confirmation message. Click the **Finish** button to launch ADS.



### **i** Notes

- For detailed license setup instructions using License Setup Wizard, see ***License Setup through Wizard (qinstall)***.
- To upgrade your license, see ***Upgrading your License File (qinstall)***.

[Back to Installation Flowchart](#)

## Launch ADS in Unix / Linux

Before starting ADS, the environment variables must be set properly. To set the environment variables, see *Set Environment Variables (install)*.

To run ADS, open a terminal window and enter the command:

```
ads
```

### **i** Note

To continue using ADS the licenses must be set. For license set up, see [ADS License Setup](#).

# License Setup through Wizard

This section describes how to setup your ADS license using ADS License Setup Wizard. The License Setup Wizard is designed for individual engineer who wants to set up his local node-locked license on his PC, or to point to an already configured network license server. It can be used to setup ADS license's for following scenario's:

- *ADS 2011 only*: If you are using only ADS 2011 (and not previous versions), you can complete the license setup by using this wizard.
- *Multiple ADS versions*
  - *Each ADS version having it's own License*: If you are using multiple ADS versions and you have individual license for each ADS version, you can still complete the license setup by using License Setup Wizard.
  - *All ADS version's are using new license version 2.9*: If you are using multiple ADS versions (ADS 2009 Update1 and earlier) and you want to use license version 2.9 for all current and previous ADS releases, then after completing the license setup through License Setup Wizard, you must manually add [environment variable](#) AGILEESOFD\_LICENSE\_FILE pointing to @localhost. Adding environment variable is one of the many methods used for license setup of releases prior to this release. For more options, refer to ADS help shipped along with your specific version.
- *Multiple EEsof Products*: If you are using more than one EEsof products, you can use product specific license wizard to complete the license setup. For example, for EMPro you can use EMPro License Setup Wizard that comes along with EMPro installer.
- *EEsof and other Agilent or EDA Products*: If you are using other Agilent products or EDA products (along with EEsof products), you can still use EEsof product specific license wizard to complete the license setup. For license setup of other Agilent or EDA products, refer to their product documentation.

## License Setup Wizard

ADS License Setup Wizard is a new tool that simplifies the license setup. This wizard helps you to set up your ADS license. This wizard can be used in all previously discussed scenario's with some manual changes in case all ADS version are using license version 2.9. The wizard is available for both Windows and Unix/Linux version and provides an easy method to:

- Add or replace license files
- Add or replace license servers
- Request additional licenses

You can apply for evaluation license or apply to purchase a new license.

**i Important**

- Before setting up your ADS license, you must obtain the new ADS license version 2.9. License version prior to 2.9 will not work with latest ADS 2011 release.
- To start the license server manually, you must use the latest version of license utilities (such as, lmttools, agileesofd, and lmutil). These utilities can be accessed from:
  - Windows: C:\Program Files\Agilent\EEsof\_License\_Tools folder
  - Unix (32 bit): <install\_folder>/EEsof\_License\_Tools/linux\_x
  - Unix (64 bit): <install\_folder>/EEsof\_License\_Tools/linux\_x\_64
- If you install multiple EEsof products or install ADS several times on a single system, the EEsof license tools directory will already exist and you will not be prompted for a location for these files. A single EEsof license tool installation will supported multiple EEsof products and multiple releases of ADS.

## Evaluation License

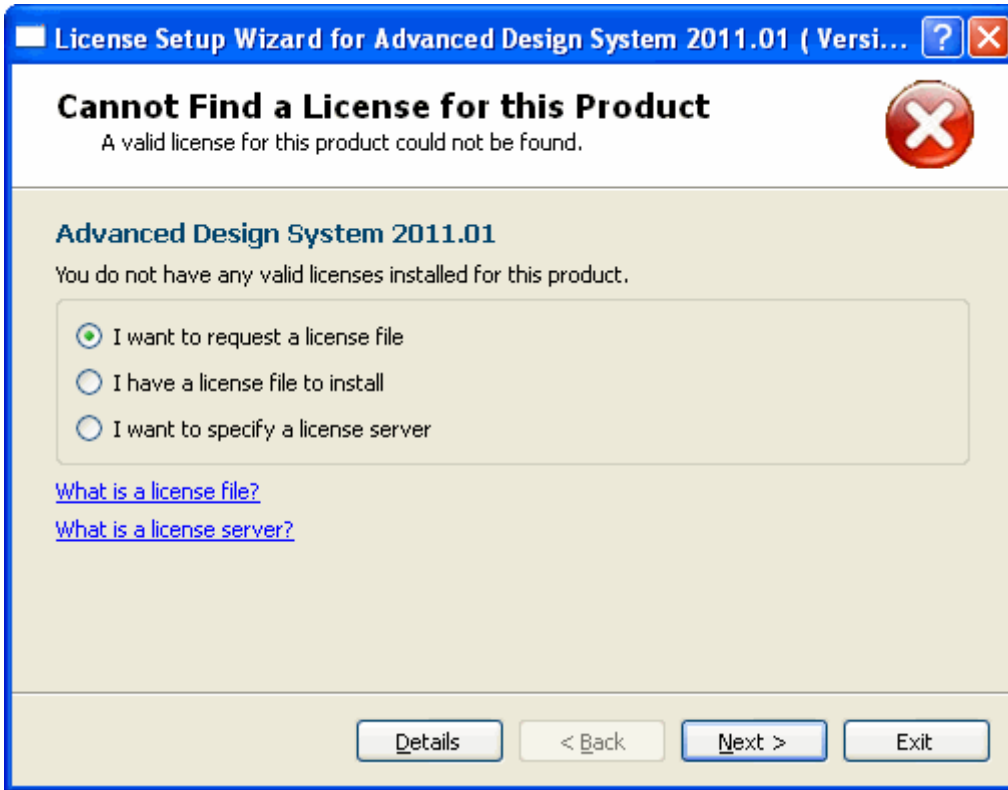
If your request for ADSevaluation license is approved, you will receive a license file (of ADS license version 2.9) as an attachment through e-mail. Save this license file on your computer as ADS License Setup wizard need this file to complete the license setup.

## Purchased License

If you purchase the ADS license, you will receive an e-mail containing an entitlement certificate. Follow the instructions in e-mail which directs you to the [Agilent Software Manager \(ASM\)](#) to redeem the certificate for a license file. The license file, with latest ADS license version 2.9, will be sent through e-mail. You can also downloaded the license file from the Agilent website. Save the license file on your computer as ADS License Setup Wizard need this to complete the license setup.

## Starting License Setup Wizard

After successful installation of the product, the interactive License Setup wizard starts automatically. This interactive wizard searches for valid ADS licenses. If any valid ADS license is found, the license setup wizard confirms the same with a message and you can launch ADS. Otherwise, wizard displays a "Cannot Find a License for this Product" message along with options to setup the licenses (if you have already purchased) or submit the request for a new license.



**Note**  
To manually start the License Setup wizard,

- Windows: Choose **Advanced Design System 2011.01 > ADS Tools > ADS 2011.01 License Setup Wizard**.
- Unix: Run `aglmwizard` from `<install_folder>/EEsof_License_Tools/linux_x` folder.

Three options displayed by License Setup Wizard are:

1. [I want to request a license file](#): Select this option if you want to submit online request to receive a license file.
2. [I have a license file to install](#): Select this option if you have already received a license file and ready to setup.
3. [I want to add or replace a license server](#): Select this option if you want to access the license from a server.

**Note**  
For information about License File and License Server, click on the links provided in the License Setup Wizard.

## Request New License File

Follow the steps below to submit a request for a new license file (evaluation or purchase):

1. Choose **Programs > Advanced Design System 2011.01 > ADS Tools > ADS 2011.01 License Setup Wizard** to start the License Setup Wizard.

**Note**

License Setup Wizard starts automatically if ADS is launched and there are issues with license setup.

2. Select *I want to request a license file* or *I want to request additional licenses* radio button and click **Next**.
3. Select *I want an evaluation license* to submit request for an evaluation license of ADS or *I want to get my purchased licenses* to submit request for new purchase and click **Next**. If you select *I want to get my purchased licenses* then skip the next three steps.



4. To receive an evaluation license select *I have an evaluation token* if you already have the token to receive evaluation license. Otherwise, select *I want to apply for an evaluation license*.
5. Click **Next**.
6. From Request Evaluation License screen, click [Agilent EEsof EDA Evaluation License Request Form](#) and submit online request for your license.
7. If you selected *I want to get my purchased licenses* option, click [Agilent Software Manager](#) and submit online request for your license.
8. Click **Finish** to terminate the wizard.

**Note**

If your evaluation license request is approved, you will receive the license file of ADS license version 2.9.

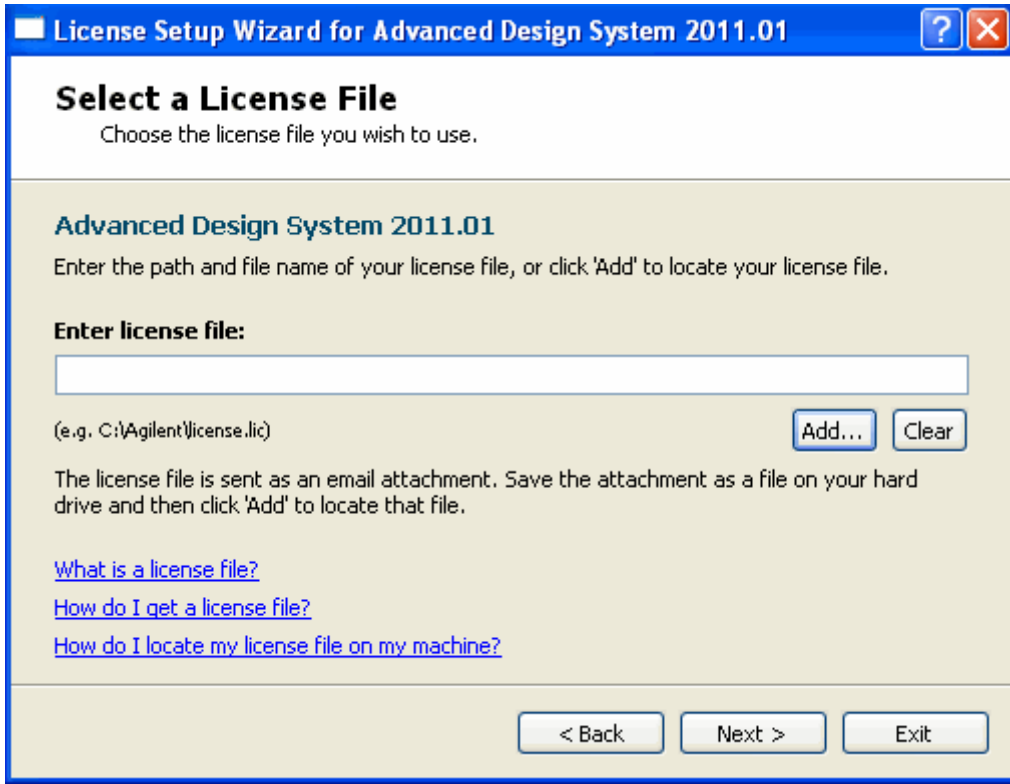
## License File Setup

If you have received email with attached license file (file with extension .lic), save the file on your computer (for windows, preferred locations is C:\Program Files\Agilent\EEsof\_License\_Tools and for Unix, <install\_folder/EEsof\_License\_Tools folder) and follow the steps below to complete the license setup:

1. Start the License Setup Wizard (as described in previous steps).

**Note**  
The license wizard starts automatically if you launch ADS without completing the license setup.

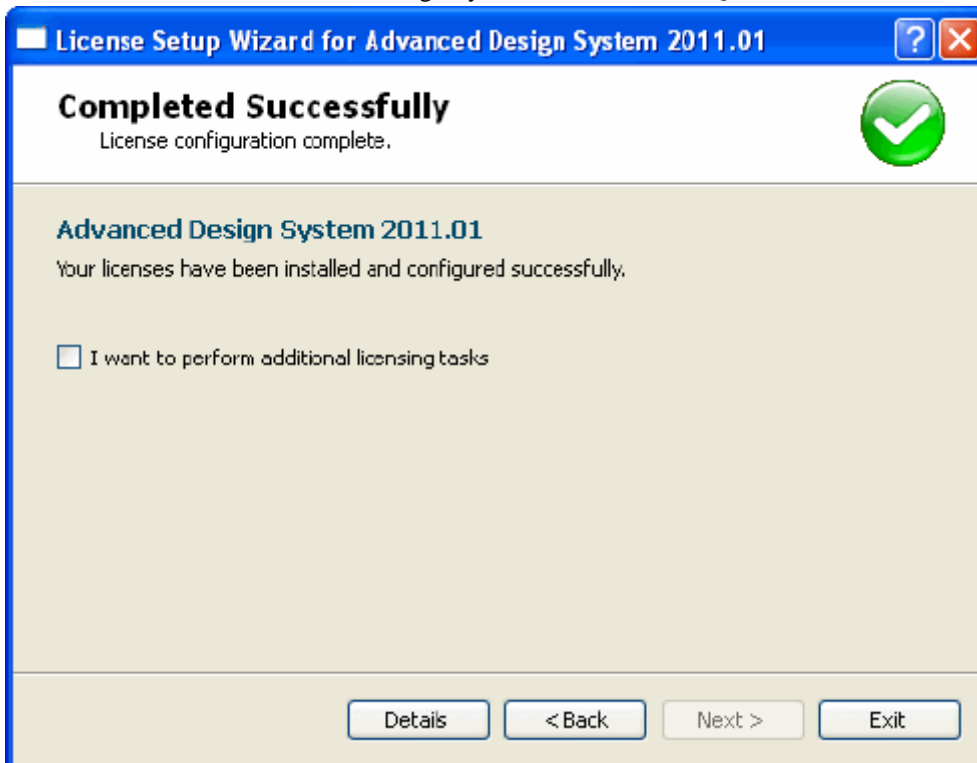
2. Select *I have a License file to install* radio button and click **Next**.



3. To add the license file, click **Add** and navigate to the location where license file is located.

**Note**  
License file can be placed anywhere on the system. Agilent recommends you to copy the license file in C:\Program Files\Agilent\EEsof\_License\_Tools for windows.

4. Click **Next**. On successful license setup, a confirmation message (see figure below) is displayed.



**Note**  
If you want to perform additional license tasks like add or replace a license file, add or replace a license server, or request additional licenses then select *I want to perform additional licenses tasks* and click **Next**.

5. Click **Exit** to terminate the wizard.

**Note**  
You can add multiple license files separated by semicolon (;).

## License Server Setup

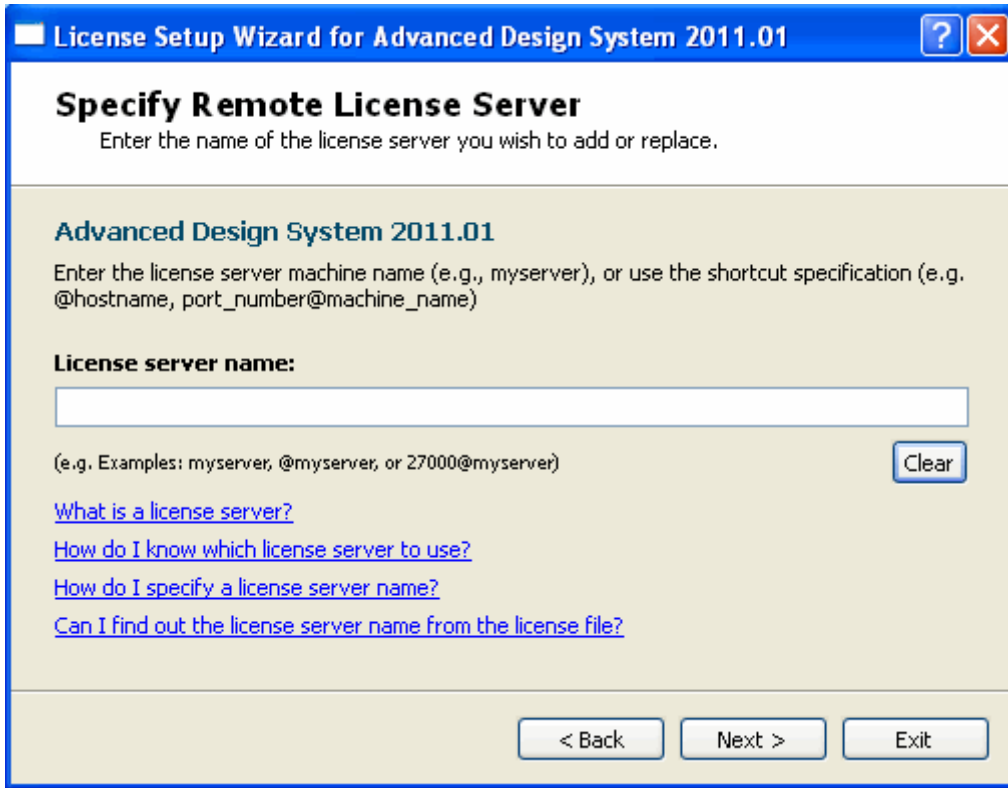
Follow the steps below to access the license from a server:

1. Start the License Setup Wizard (as described in previous steps).

**Note**  
The license wizard starts automatically if you try to launch ADS without completing the license setup.

2. Select *I want to add or replace a license server* radio button and click **Next**.





- To add a license server, enter the server name and click **Next**. A confirmation message is displayed on successful setup of the license.

**Note**  
If you want to perform additional license tasks like add or replace a license file, add or replace a license server, or request additional licenses then select *I want to perform additional licenses tasks* and click **Next**.

- Click **Exit** to terminate the wizard.

**Note**  
You can add multiple license server names separated by a semicolon(;).

## Upgrading your License File

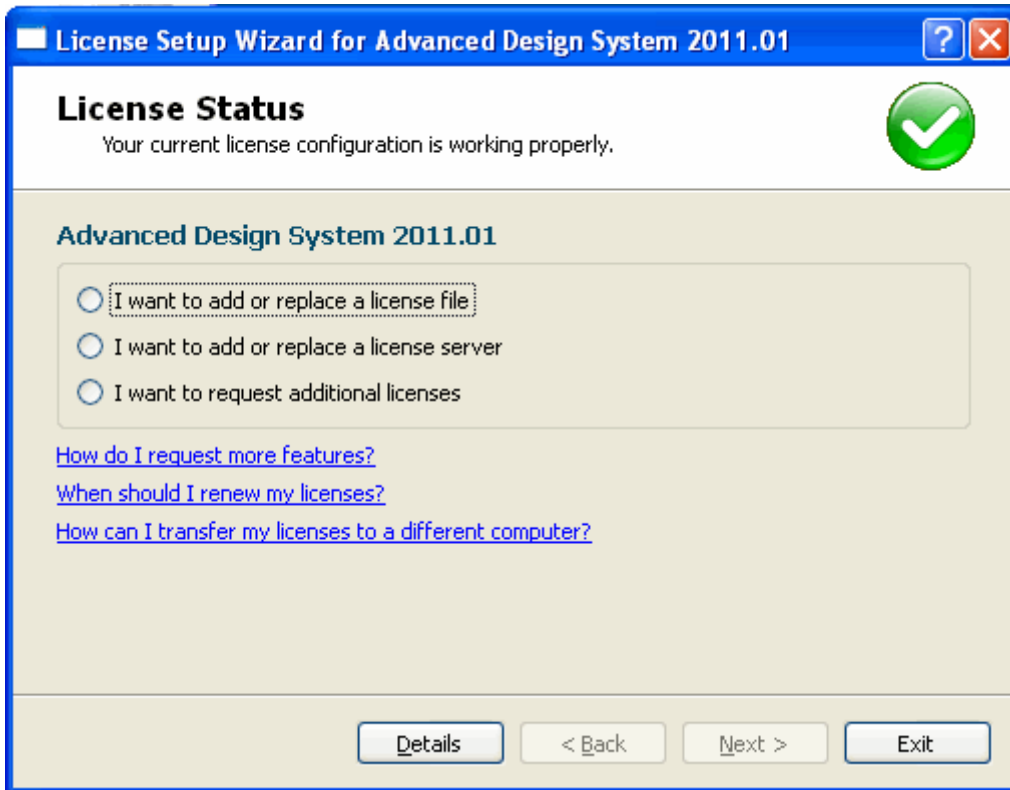
To upgrade your license from Evaluation License to Purchased License or add new licenses, follow the steps below:

- Choose **Programs > Advanced Design System 2011.01 > ADS Tools > ADS**

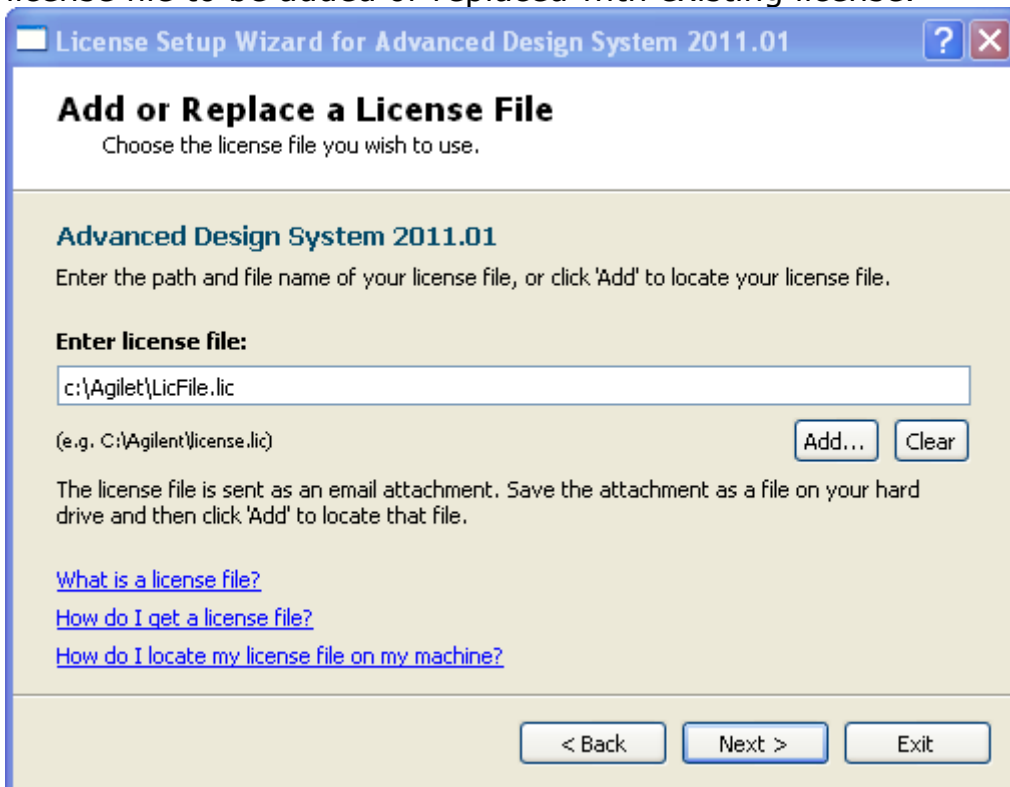


License Setup  
Wizard

- 2011.01 License Setup Wizard** or click **License Setup Wizard** on your desktop to start the License Setup Wizard.
- Click **Next** to start the license setup process.
- In License Status screen, select *I want to add or replace a license file* and click **Next**.



4. To add a new license file or replace an existing license file, click **Add** and select the license file to be added or replaced with existing license.



**Note**  
You can add multiple license files.

5. Click **Next**. A confirmation message is displayed after successful setup of license.

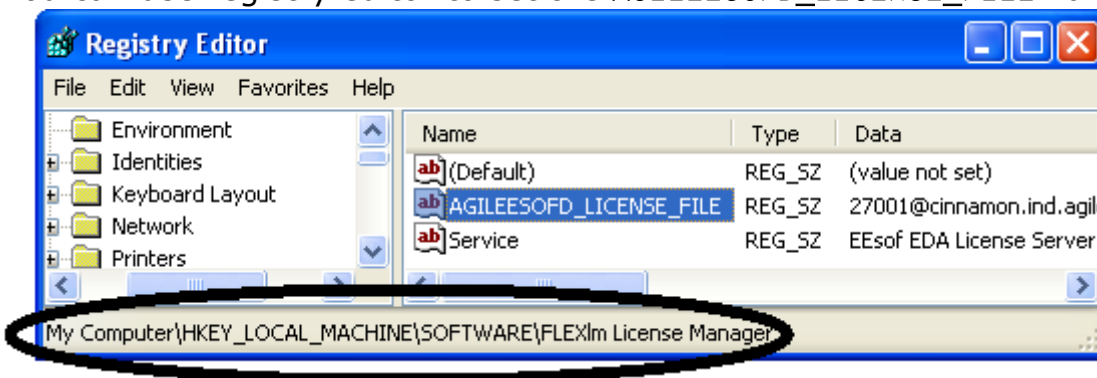
For detailed license setup instructions (without license setup wizard), see *ADS License*

## License Setup for Previous ADS Releases

To use license version 2.9 or later, for previous ADS releases (ADS 2009 Update 1 and prior) , you must manually change the environment variable setting. There are different ways to change those setting and two commonly used options are listed below.

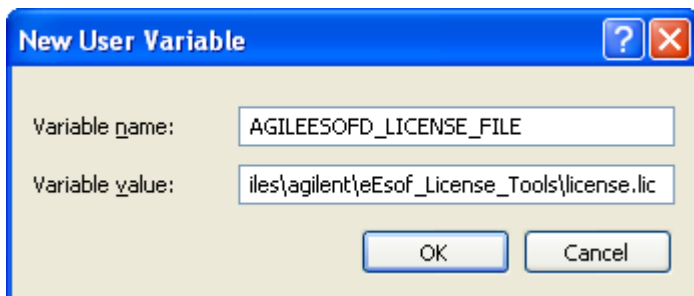
### Using Registry Editor

You can use registry editor to set the AGILEESOFD\_LICENSE\_FILE variable.



### Environment Variable settings

If you are using license version 2.9 for previous ADS releases (ADS 2009 Update 1 and prior) , you must manually add the environment variable AGILEESOFD\_LICENSE\_FILE . This variable must point to the license file (along with file name and location).



# Remote Simulation

You can run simulations on a local or remote machine. When a simulation is run on a remote machine, it is known as remote simulation. There are two types of remote simulation:

- Circuit remote simulation
- EM remote simulation

## Circuit Remote Simulation

In a circuit remote simulation, you can use the following modes of simulation:

- ADS remote simulation
- LSF remote simulation
- Sun Grid Engine remote simulation
- Distributed remote simulation

For more details about the remote simulation modes, see *Circuit Remote Simulation* (cktsim).

## EM Remote Simulation

You can run EM simulations on a local or remote machine, or take advantage of a third party load balancing and queuing system such as LSF, Sun Grid Engine, and PBS Professional. You can choose one of the following simulation modes:

- Local/Remote Simulation
- Third Party (Distributed) Simulation

Using the EM Setup window, you can specify the setup options for local or remote and distributed simulations. For more information, see *Specifying Simulation Resources* (em). You can manage non-interactive EM simulation processing jobs by using the Job Manager window, which provides a user interface to show the job status and messages. For more information, see *Using the Job Manager* (em).